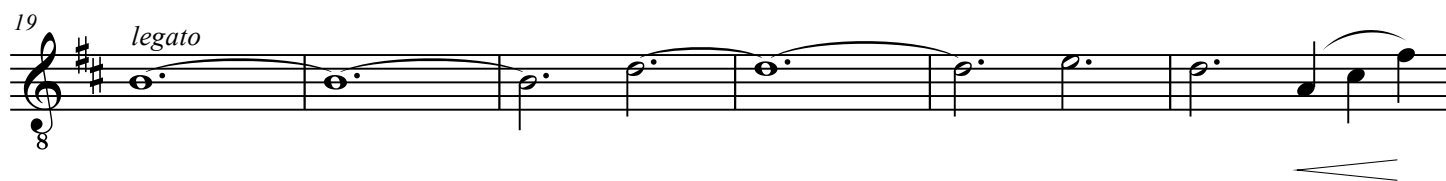
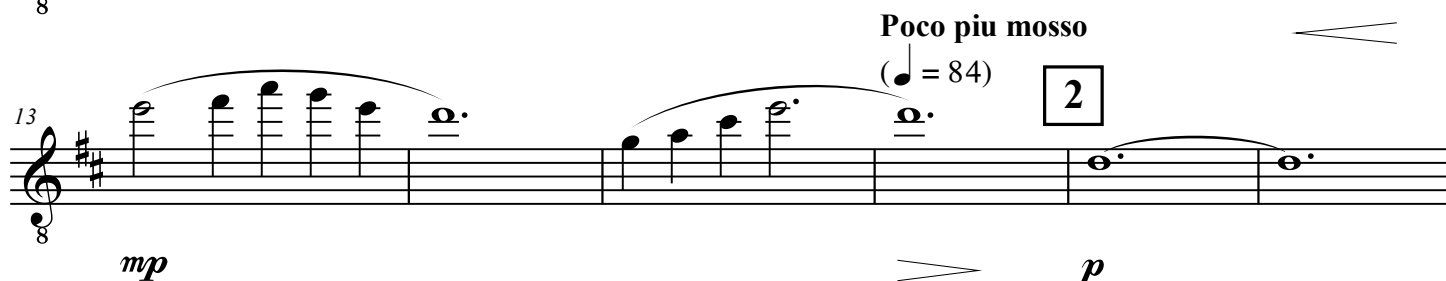
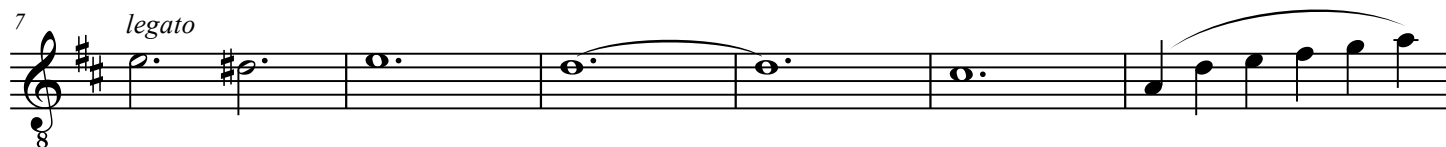
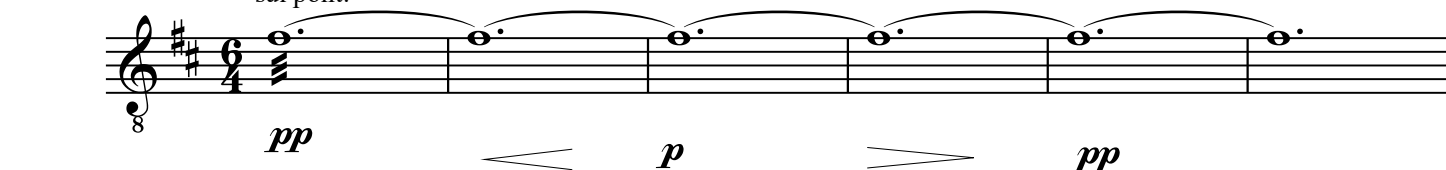


РУССКАЯ НАРОДНАЯ ПЕСНЯ СТЕПЬ ДА СТЕПЬ КРУГОМ

Lento $\text{♩} = 72$
sul pont.

1 Аранжировка Е. Петрова



39

sff *ff* *dim.*

42

legato *rall.* **5** **Meno mosso** ($\text{♩} = 88$) *rall. poco a poco*

p

47

pp

54

sul pont.

pp